

## **“EMERGENCY SERVICES WITH REFERENCE TO FIRE BRIGADE SERVICES IN SOLAPUR CITY: A GEOGRAPHICAL ANALYSIS”**

**Dr. Shinde N.G.**

### **Abstract:**

*The present paper is deals with the emergency service of fire brigade services in Solapur city. Fire brigade services are now playing vital role in social life. The every city goes through rapid population growth which results growth of settlements and industry. Increasing industrialization, Population growth and urban sprawl of city require fire brigade services for safety. The present research paper focuses on the fire brigade services in Solapur city, for the analysis zone wise distribution is studied.*

**Keywords:** emergency services, fire brigade services.

### **INTRODUCTION:**

A fire department or fire brigade also known as a fire and rescue service. It is a public organization that provides predominantly emergency firefighting and rescue services for a certain jurisdiction, which is typically a municipality, county, or fire protection district. A fire brigade service may provide "fire protection" or fire prevention services, whereby firefighters visit homes and give fire safety advice and fit smoke alarms for the members of public.

(Cote, Arthur E., 2003). In many countries fire protection and prevention is seen as an important role for the fire service, as

preventing a fire from occurring in the first place can save lives and property. Fire brigade departments also carry out an enforcement role, to ensure that buildings (homes, hotels, offices, factories, and so on) are equipped with adequate fire precautions to limit the chances of fire and ensure that in the event of fire, people can safely evacuate the premises unharmed. This is also part of the protection and prevention role.

### **STUDY AREA:**

The city of Solapur is located in between 17<sup>0</sup>43' 30" north latitudes and 17<sup>0</sup>46' 15" north latitudes to 75<sup>0</sup>52' 10" east to 75<sup>0</sup>58' 20" east longitude. The city lies

about 550 meters above the mean sea level. The area under the jurisdiction of the Solapur, in Municipal Corporation has an area of 178.57 square kilometer. The Solapur city is bounded by 16 villages.

According to 2007, the Population of city was estimated 977162, and after the merging of number of villages in the city of Solapur. (Fig 1)

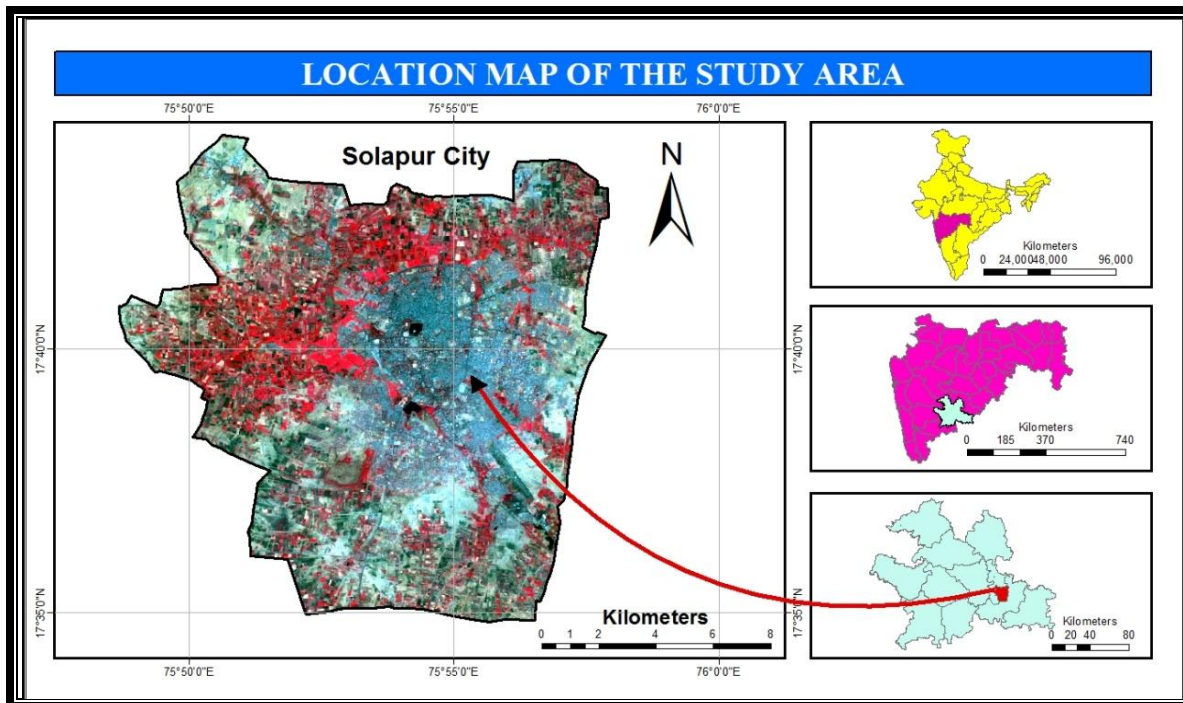


Fig. No. 1

**OBJECTIVES:** The present study has certain specific objectives.

1. To study history of fire brigade services in study area.
2. To study distribution pattern of fire brigade services in Solapur city.

3. To study Zone wise distribution of fire brigade services and need for future availability in study area.

**DATA COLLECTION AND METHODOLOGY:**

For the present study covers an entire city as the study area. The analysis is purely

based on quantitative data collected from Solapur Municipal Corporation and fire brigade department. The secondary data collected from census of India, published by the directorate of economics and statistics, Government of Maharashtra, District census handbook, Gazetteers, Socio-Economic. The collected data is processed and edited with cartographic.

### **History Of Fire Brigade Services:**

The history of fire brigade service in Solapur city was poor till the 1881. After the completion of Ekrukha water tank project fire brigade service system well established through the construct small water tank and hand pump. At the end of the 1905, three manual pipes located at three different locations. The renovation of fire brigade services started in 1926. In the 1941 three fire brigade centres were established having 162 hydrants. (Kulkarni G.P, 1953) After the independence fire brigade services has been changed according to technological development.

### **Distribution Fire Brigade Services In Solapur City:**

The fire brigade service also comes under emergency services. The Solapur city has huge industrial activity (M.I.D.C) located in the study area. The growing population of city, increasing industrial area, commercial activity and increasing built up area require adequate fire brigade services. The Solapur city is divided into 8 administrative zones, out of zone I; II, IV and VI have no fire brigade stations. The zone III, V, VII and VIII have fire brigade stations. Table 1 and figure 1 shows that, the zone wise fire brigade station with number of fire brigade buses. The highest fire brigade services concentrated in Zone III. The zone III has two fire brigade stations. One is located in bhavani peth and another is located in Akkalkot road. It includes total 5 fire brigade buses. Bhavani peth is the first fire brigade station in Solapur city. It is located near the source of water. The availability of water and pioneer station are the main causes of high concentration of buses and services. Akkalkot road fire brigade station is due to nearness of M.I.D.C area. The medium concentration of fire brigade services is in the zone VIII. The

lowest concentration of fire brigade services is in the zone V and VII. In the zone VIII fire brigade station is located in Raviwar Peth have 2 buses. The Zone V and VII both have one fire brigade station; one is located in hotgi road and second is Sawarkar Ground respectively. The zones V and VII each have one Fire brigade buses. The overall distribution of fire brigade services in study area is uneven.

Usually, the service of fire brigade is provided within the city limits to protect lives and property of citizens from fire and

accidents. If situation arises out of city limits, the said service can be rendered with a prior permission of the officers and certain fees will be charged to some extent. In case of fire extinguishing the chief of fire brigade staff may order the staff of the Municipal Corporation and other officers to assist them willfully. It is the duty of police and municipal servants to assist fire brigade staff in the task. In case any kind of loss occurred due to helplessness of police and municipal staff, they will be liable for such losses.

Table 1. Zone wise Fire Brigade Services-2014

<b>Zone</b>	<b>Fire Brigade Station</b>	<b>Fire Brigade buses</b>	<b>Total</b>
<b>Zone I</b>	<b>Nil</b>	<b>00</b>	<b>00</b>
<b>Zone II</b>	<b>Nil</b>	<b>00</b>	<b>00</b>
<b>Zone III</b>	<b>Bhavani Peth</b>	<b>04</b>	<b>05</b>
	<b>Akkalkot Road</b>	<b>01</b>	
<b>Zone IV</b>	<b>Nil</b>	<b>00</b>	<b>00</b>
<b>Zone V</b>	<b>Hotgi Road</b>	<b>01</b>	<b>01</b>
<b>Zone VI</b>	<b>Nil</b>	<b>00</b>	<b>00</b>
<b>Zone VII</b>	<b>Sawarkar Ground</b>	<b>01</b>	<b>01</b>
<b>Zone VIII</b>	<b>Raviwar Peth</b>	<b>04</b>	<b>04</b>
	<b>Total</b>	<b>11</b>	<b>11</b>

**Source:** Solapur Municipal Corporation, Fire Brigade Department.

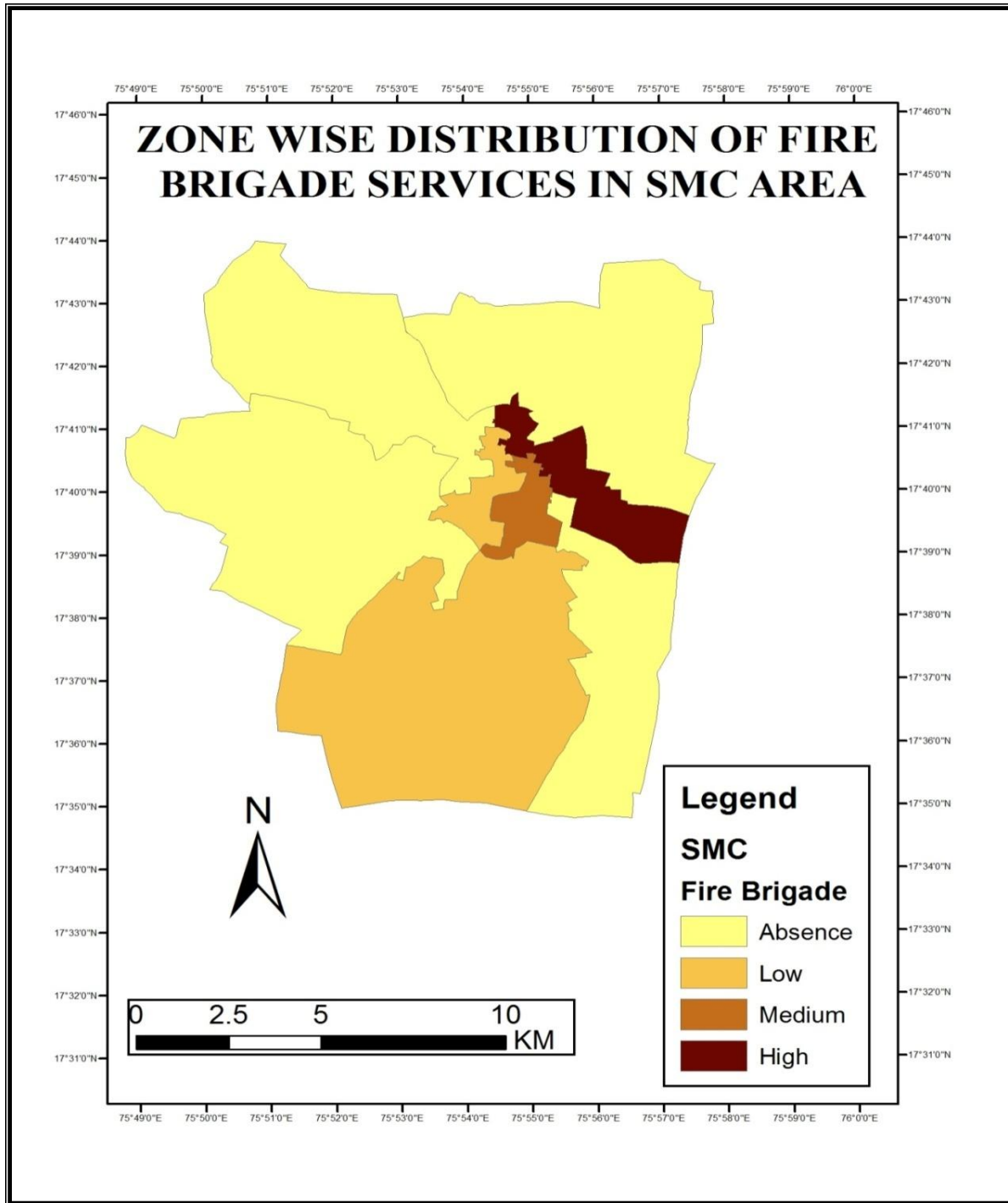


Fig . 2

### CONCLUSION:

1. The fire brigade service is vital in the million cities. According to population size fire brigade service is low. The sprawl areas are far away from the city. The delays in fire brigade response time in the city.
2. The highest Fire brigade services concentrated in zone III. The zone III has two fire brigade stations with 5 fire brigade buses. It is because Bhavani peth is pioneer station having continuous source of water.
3. The Medium concentration of fire brigade services is in the zone VIII.
4. The lowest concentration of fire brigade services is in the zone V and VII.
5. The zones I, II, IV and VI has absence of Fire brigade stations. But these zones served by other stations in the city.
6. The fire brigade services in SMC area has long history, changing according to time and technology.

### SUGGESTION:

1. The fire brigade stations should locate in each zone with sufficient fire brigade buses.
2. The separate fire brigade station with sufficient number of buses should locate near the M.I.D.C area.

### REFERENCES:

1. **Cote, Arthur E.** (2003). Basics of Fire and Fire Science. Organizing for Fire and Rescue Services. Jones and Bartlett Publishers. p. 92
2. **Kulkarni G.P** (1953). Shathsavatsarik Granth, Solapur Municipal Corporation, Solapur.
3. **Solapur City Development Plan** (2006). Prepared as per Urban Infrastructure Development Scheme for Small and Medium Towns, Guidelines Executive Summary Submitted by and fortress financial service limited.

### WEBSITES:

1. [www.solapur.gov.in](http://www.solapur.gov.in)
2. [www.solapurcorporation.gov](http://www.solapurcorporation.gov)