

“EMERGENCY SERVICES WITH SPECIAL REFERENCE TO HOSPITALS IN SOLAPUR CITY: - A GEOGRAPHICAL ANALYSIS”

Tatipamul.R.V.

Assistant Professor Dept of Geography
S.M.Dnyandeo Mohekar Mahavidyalaya, Kallam.

Abstract:

The present paper is deals with the emergency service of hospitals in Solapur city. Health care facilities are the basic needs of human being. The every city goes through rapid population growth which require plentiful of hospitals. Population growth increases the number of vehicles. It result increase in Noise and Air pollution. Presently human being faces lot of health care problems it includes various diseases spread across the world. The present research focuses on the hospitals facilities in Solapur city, for the analysis zone wise distribution is studied.

Keywords: - Health care services, hospitals

Introduction:

Health care services are basic need of human being. It comes under emergency services. The distribution and number of hospitals depends upon the population size. The rapidly growing population in city faces lot of problems about health. Population increases leads to the increase in the number of patients in various diseases. In the city growing number of vehicles leads Air and Noise pollution. In the last 10 years number of accidents has increased very fast. Now day's new diseases spread across the world. Its spread in city very rapidly. For examples, swine flu, chicken guniya, Ebola etc. So the need of hospitals increased day by day.

In the present research work researcher has considered hospitals only. The hospitals having multidignosis, treatment facilities and 24 hrs open hospitals have been considered. In the present study an attempt has been made to sort out

number of hospitals zone wise with their specialty, facility available and other emergency services. Presently the Solapur Municipal Corporation Divided into 8 Administrative zones. Solapur city have total 217 hospitals. It includes government hospitals and medical colleges with multispecialty hospitals. The urban built up areas expands all around peripheral areas of the city. The newly included areas lack of multispecialty hospitals.

Objectives: -

The present study has certain specific objectives.

1. To study distribution pattern of hospitals in Solapur city.
2. To study Zone wise distribution of hospitals and need for future availability in study area.

Study Area

The city of Solapur is located in between 17⁰43' 30" north latitudes and 17⁰46' 15" north latitudes

to 75°52' 10" east to 75°58' 20" east longitude. The city lies about 550 meters above the mean sea level. The area under the jurisdiction of the Solapur, in Municipal Corporation has an area of 178.5 square kilometer. The Solapur city is bounded by 16 villages.

According to 2007, the Population of city was estimated 977162, and after the merging of number of villages in the city of Solapur. According to Solapur Municipal Corporation in 2011 Population are **1133009**. (Fig 1.1)

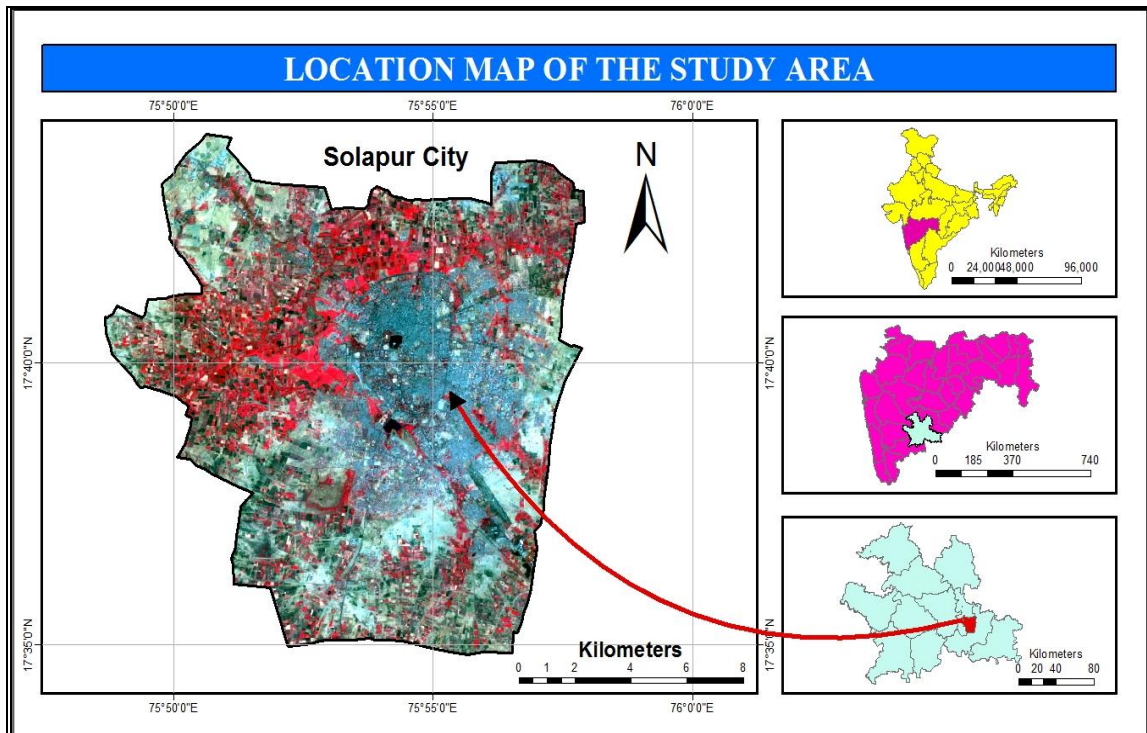


Fig 1.1

Data Collection and Methodology

For the present study covering an entire city select the study area. The analysis is purely based on quantitative data collected from Solapur Municipal Corporation Health Department. The secondary data collected from census of India, published by the directorate of economics and statistics, Government of Maharashtra, District census handbook, Gazetteers, Socio-Economic Review of Solapur District

2011-12. The collected data is processed and edited the various cartographic and quantitative as well as statistical methods used for analysis of present

Data Analysis:-

The data is collected from secondary sources. The analysis of data used various statistical methods are used for the analysis of the collected data. The data is divided in

various categories. The data shown is by Maps and tables.

Multispecialty Hospitals in SMC

The Table 1.1 shows multispecialty hospitals in SMC in eight administrative zones. The Fig 1.2 shows the total number of multispecialty hospitals in each zone. The total numbers of hospitals are 217 in the study area. The Zone VII shows highest concentration of multispecialty hospitals in the study area. The Zone VIII and I show Medium Concentration multispecialty hospitals. The Zones II, IV, V, VI shows lowest concentration of multispecialty hospitals in the study area. General practice hospitals are highest as compared other hospitals. Pediatrics, ENT and super specialty hospitals are very less in study area.

General /Practice Hospitals

The Table 1.1 and Figure 1.3 show the distribution of general hospitals in the study area. The Zone VII shows highest concentration of General practice hospitals in the study area. The zones I, III, V, VIII shows Medium Concentration of General Hospitals. The zone II, IV and VI shows lowest concentration of Generals hospitals in the study area.

Gynecologist Hospitals

The Table 1.1 and Figure 1.4 show the distribution of Gynecology hospitals in the study area. The Zone I and VII show highest concentration of Gynecologist hospitals in the study area. The Zone VIII shows Medium Concentration of Gynecologist

hospitals. The zones II, III, IV, V and VI show lowest concentration of hospitals in the study area.

General Surgeon Hospitals

The Table 1.1 and Figure 1.5 show the distribution of General Surgeon hospitals in the study area. The Zone VII show highest concentration of General Surgeon hospitals in the study area. The Zones I and III show Medium concentration of General Surgeon hospitals. The Zones II, V, VII show lowest concentration of General Surgeon hospitals. The Zone IV and VI show Absence of General Surgeon hospitals. In Solapur city overall distribution of General Surgeon hospitals are negligible.

Pediatrics Hospitals

The Table 1.1 and Figure 1.6. Show the distribution of Pediatrics hospitals in the study area. The Zone VII and VIII show highest pediatrics hospitals. The Zone II and V show lowest concentration of pediatrics hospitals. The Zones I, III, IV and VI shows absence of pediatrics hospitals. Solapur city is lack in pediatrics hospitals.

Ear, Nose and Throat (ENT) hospitals

The Table 1.1 and figure 1.7 shows the distribution of ENT hospitals in the study area. The zone III and VII shows high concentration of ENT hospitals. The zone IV, V, VI and VIII shows absence of ENT hospitals.

Other Super Specialty hospitals

The Table 1.1 and Figure 1.8 show the distribution of other super specialty hospitals in the study area. It includes the Neuro, skin, kidney and eye specialist hospitals. The Zone VII has highest concentration of super specialty hospitals. The zone VIII

shows Medium concentration of super specialty hospitals. The zone I, II, III and V shows low concentration of Super Specialty hospitals. The remaining zone III, IV and VI shows absence of super specialty hospitals.

Table 1.1 Multispecialty Hospitals in Solapur Municipal Corporation

Zones	General practice	Gynecologist	General surgeon	Paediatrics	ENT	Super specialty	Total	Percentage of Hospitals
Zone I	15	19	02	00	01	01	38	17.51
Zone II	03	03	01	01	01	01	10	4.60
Zone III	12	06	03	00	02	01	24	11.05
Zone IV	01	07	00	00	00	00	08	3.68
Zone V	09	07	01	01	00	01	19	8.75
Zone VI	07	03	00	00	00	00	10	4.60
Zone VII	36	20	08	02	02	10	78	35.94
Zone VIII	12	13	01	02	00	02	30	13.82
Total	95	78	16	06	06	16	217	100

(Source: - Solapur Municipal Corporation Health Department)

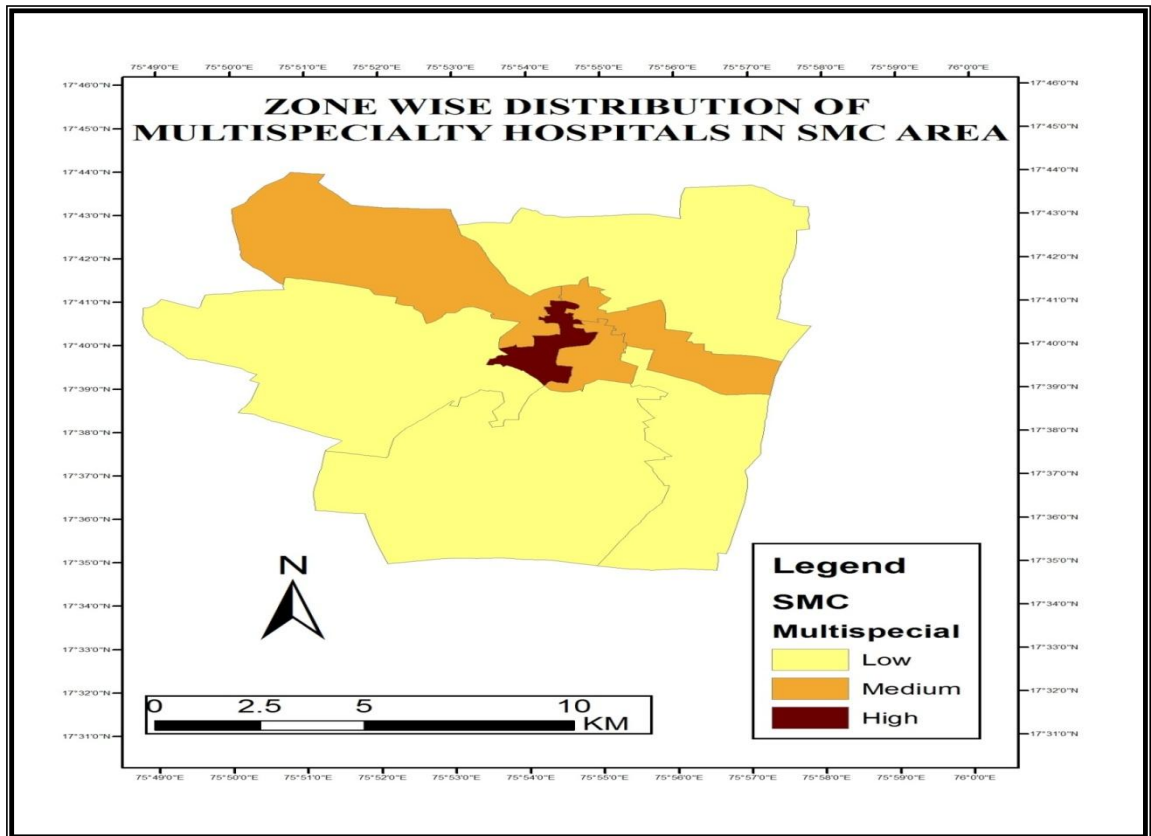


Fig 1.2

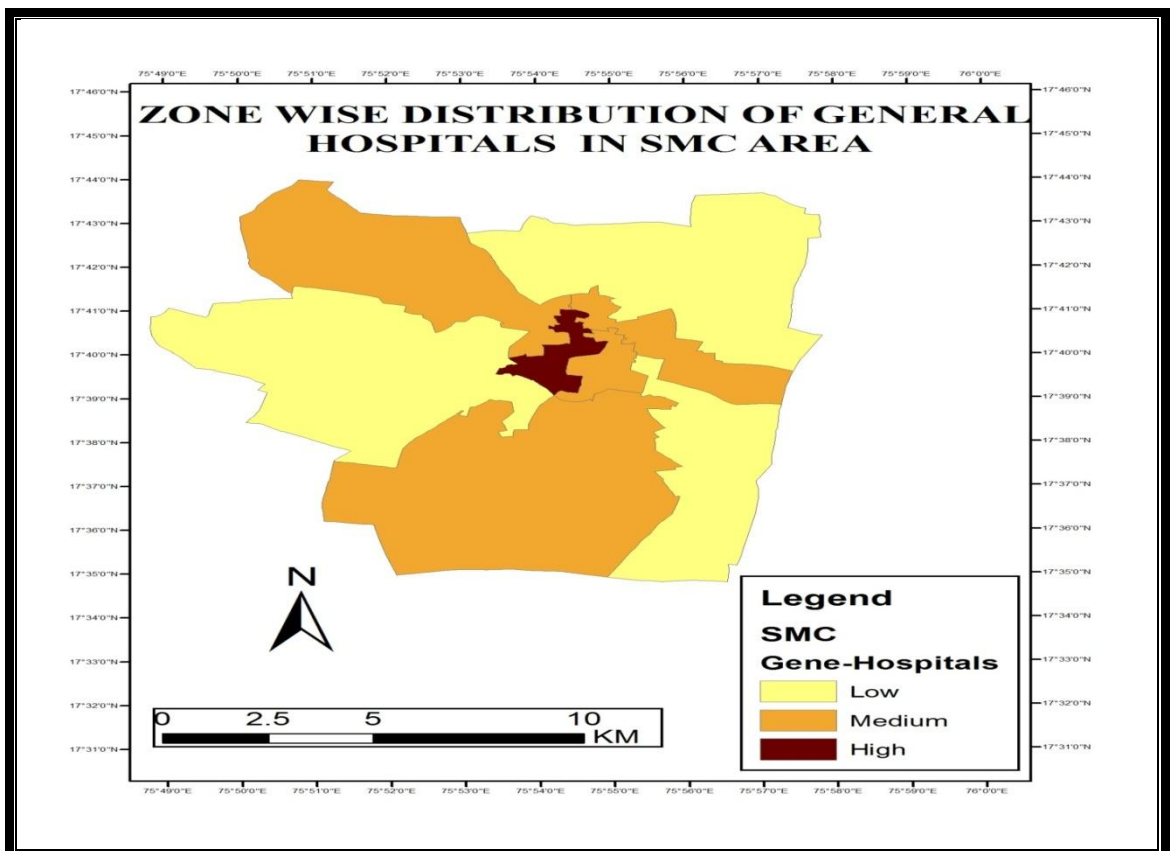


Fig 1.3

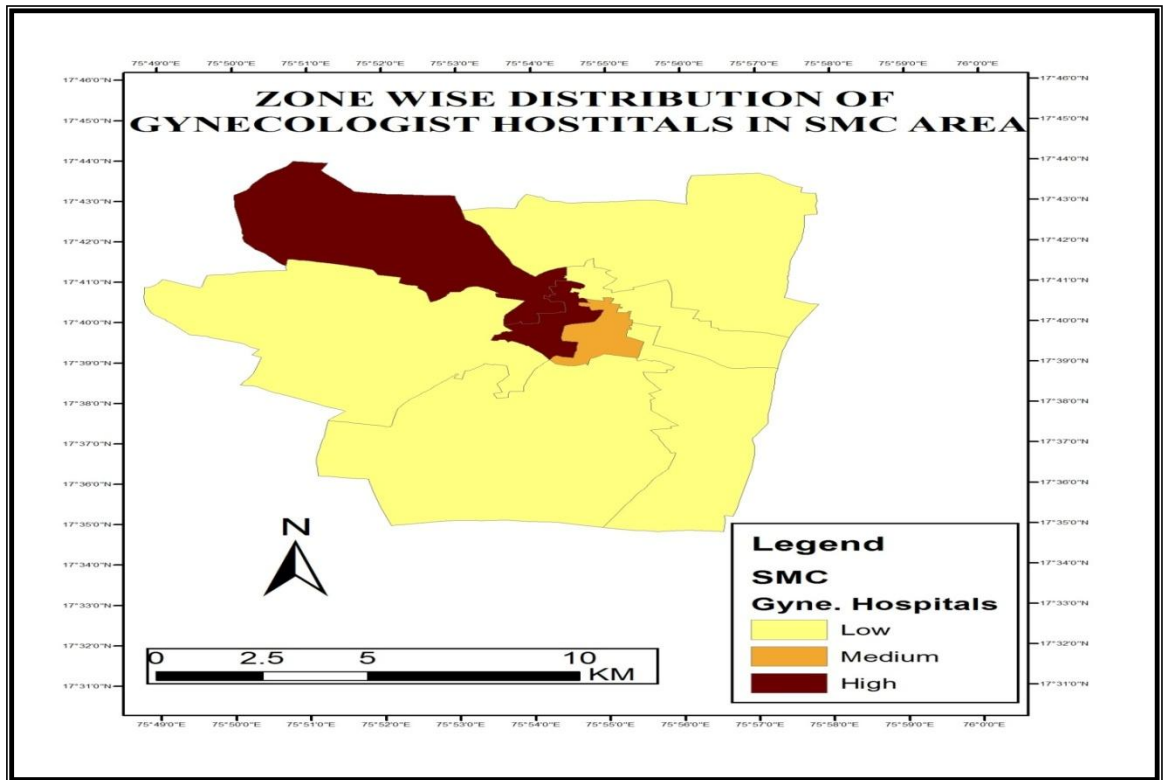


Fig 1.4

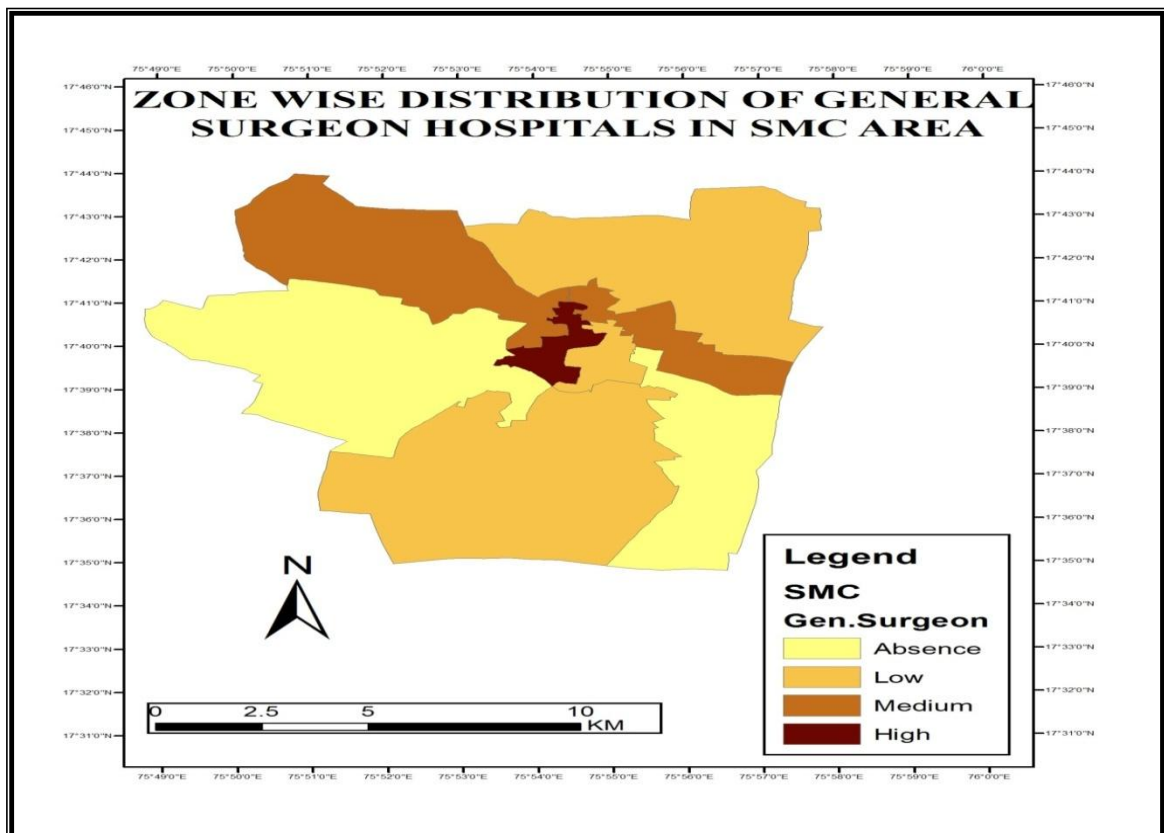


Fig 1.5

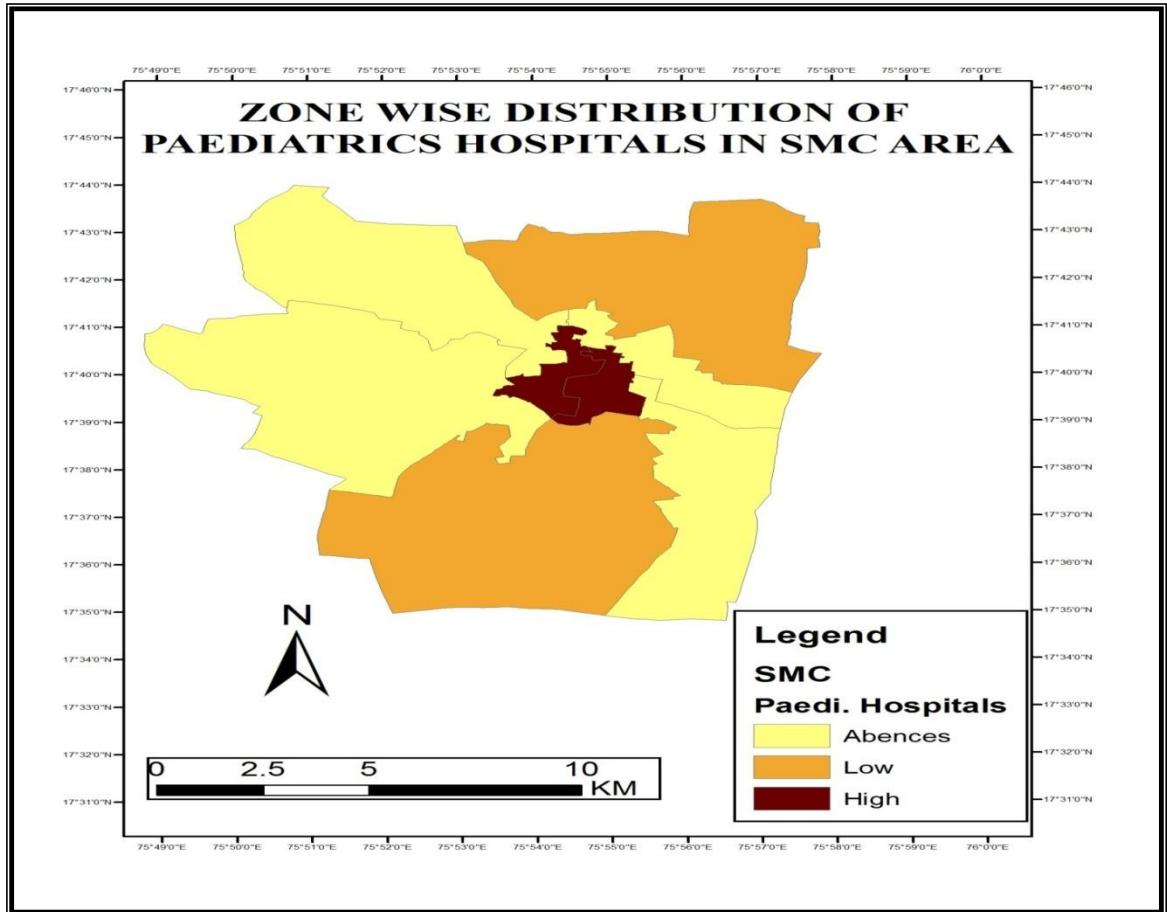


Fig 1.6

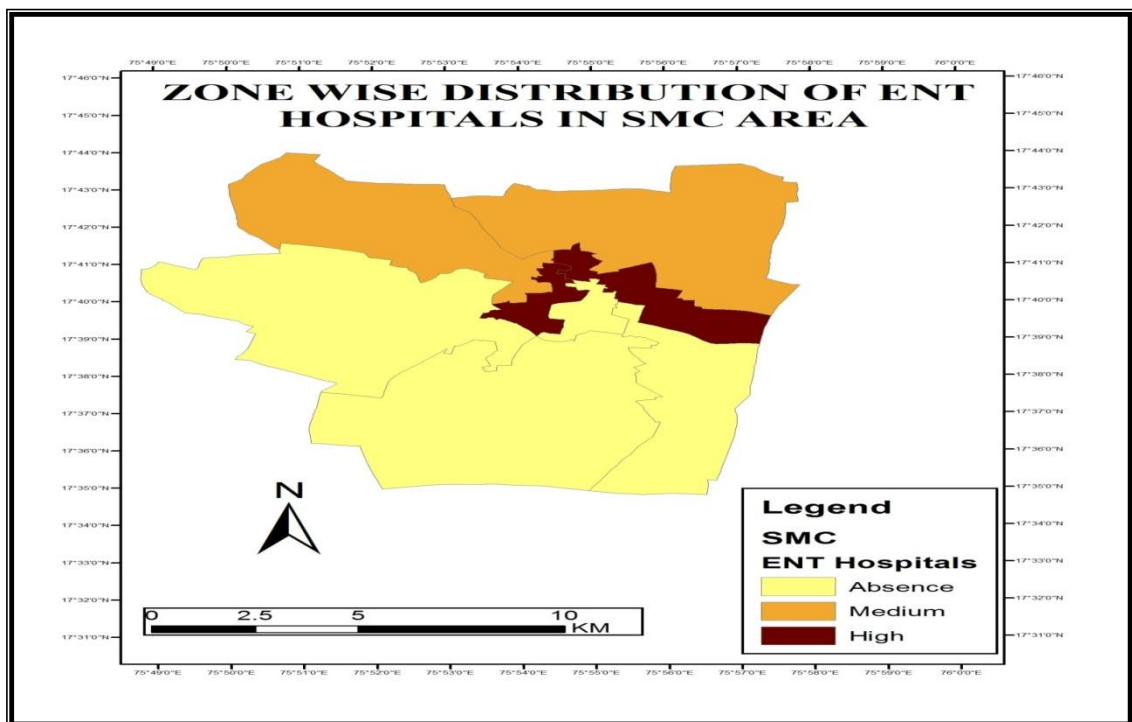


Fig 1.7

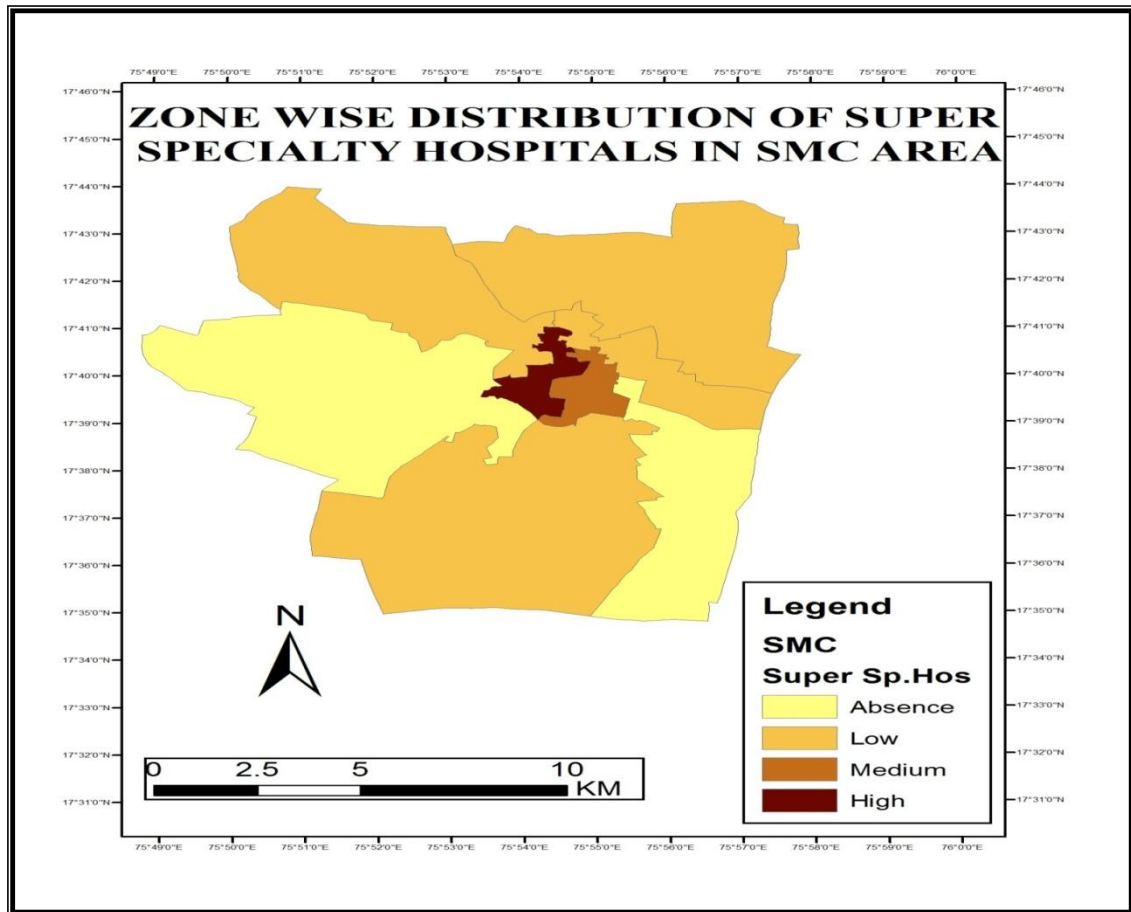


Fig 1.8

Conclusion

The present research work is focuses on emergency services with special reference to hospitals. The distributions of hospitals are uneven. The specialist hospitals distribution is also unevenly distributed. The followings are the important conclusions of different services work.

- 1) The highest concentration of Multispecialty hospitals are in the zone VII.
- 2) The Medium Concentration of multispecialty hospitals are in zone VIII and I.
- 3) The Zones II, IV, V, VI shows lowest concentration of

multispecialty hospitals in the study area.

- 4) The highest Number of General Practice hospitals are in zone VII and lowest in IV.
- 5) The highest Number of Gynecologist hospitals are in zone VII and lowest in II.
- 6) The highest Number of General Surgeon hospitals are in zone VII and lowest in II, V, VIII.
- 7) The highest Number of Pediatrics hospitals are in zone VII and VIII and lowest in II and V.

- 8) The highest Number of ENT hospitals are in zone III and VII and lowest in I and II.
- 9) The highest Number of Super Specialty hospitals are in zone VII and lowest in I, II, III and V.

References:

1. Census of India, District Census Handbook, Solapur series 14, 2001.
2. Census of India, District Census Handbook, Solapur series 15, 2011.
3. Chandana R.C. geography of population, Kalyani publication, New Delhi, 1989.